

Alaska Designated Common Traffic Advisory Frequency Areas

Presented to: Aeronautical Charting Forum

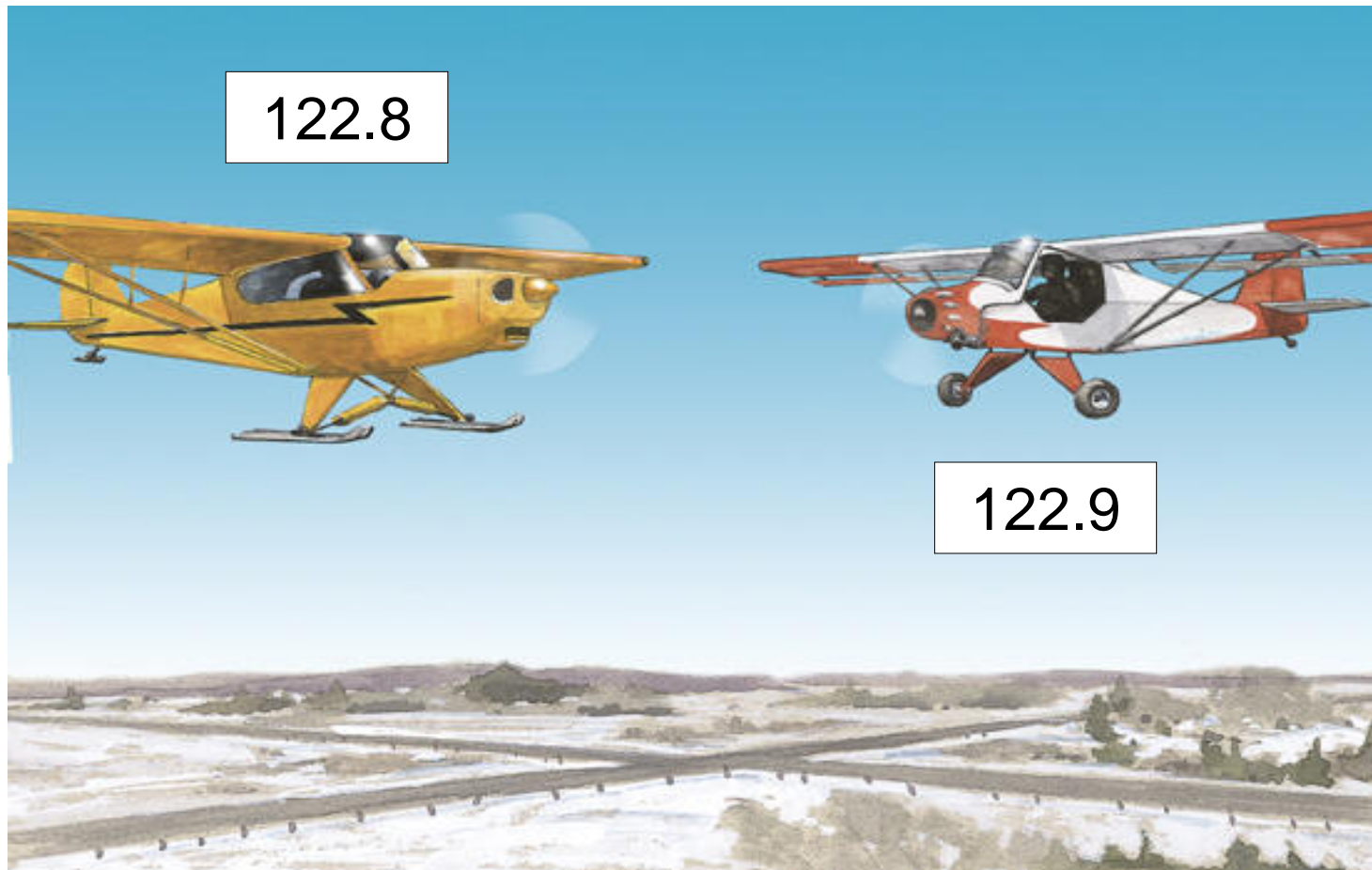
By: Mike Yorke



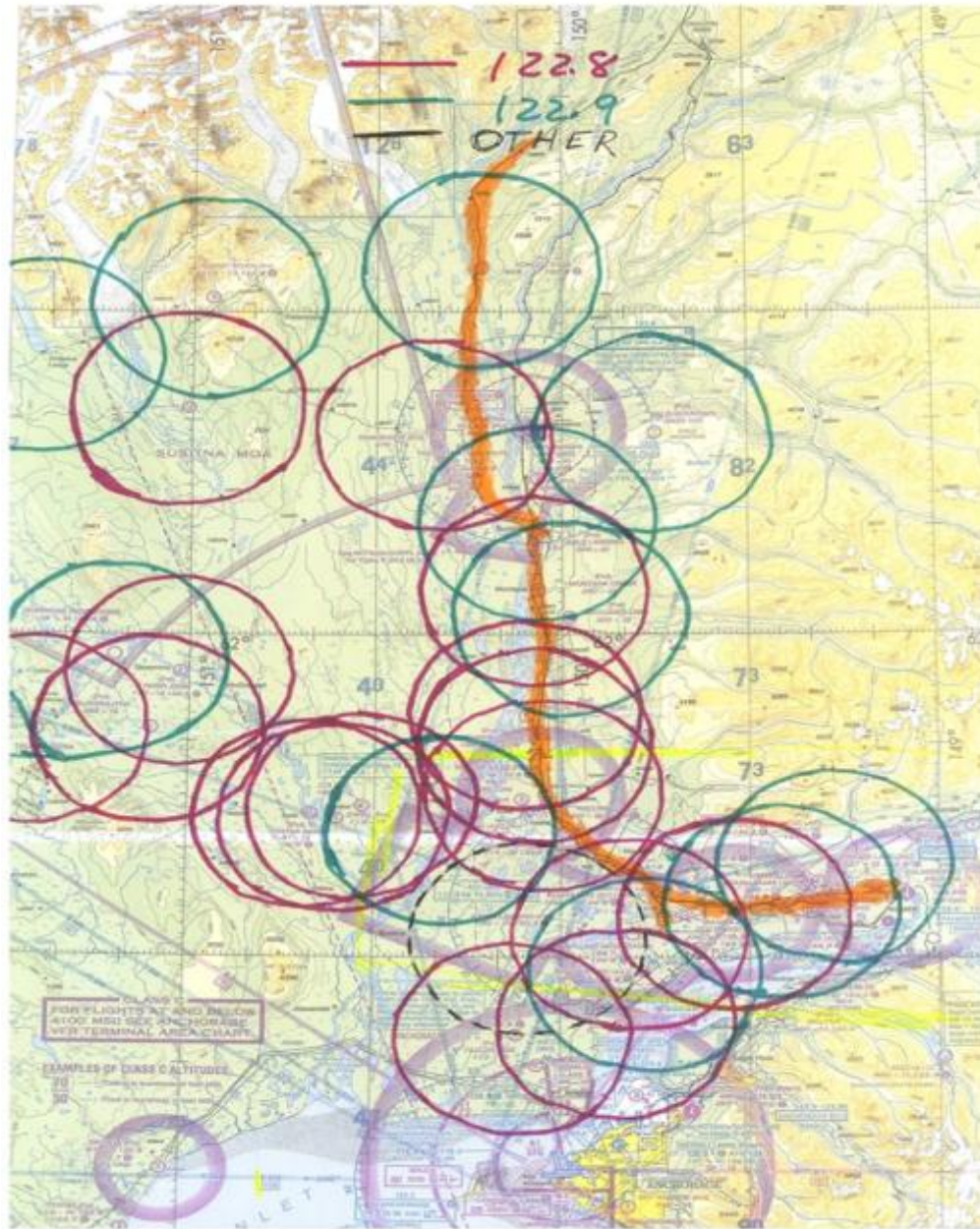
**Federal Aviation
Administration**



NTSB Findings



How did we get here?



Planes collide in Lake Clark Pass, no injuries

Margaret Bauman | The Cordova Times | July 11, 2011



NTSB: Pilot error to blame for fatal 2011 mid-air collision involving couple

BY ZAZ HOLLANDER

zhollander@adn.com February 14, 2014



Floatplane collision kills longtime Alaska family of four

FAMILY: Carlsons considered little Cessna their 'minivan,' says sister.

BY LISA DEMER
ANCHORAGE DAILY NEWS
July 31, 2011



Pilot dies in midair collision in Alaska, third such crash this summer

Alaska Dispatch | September 3, 2011



Action Taken

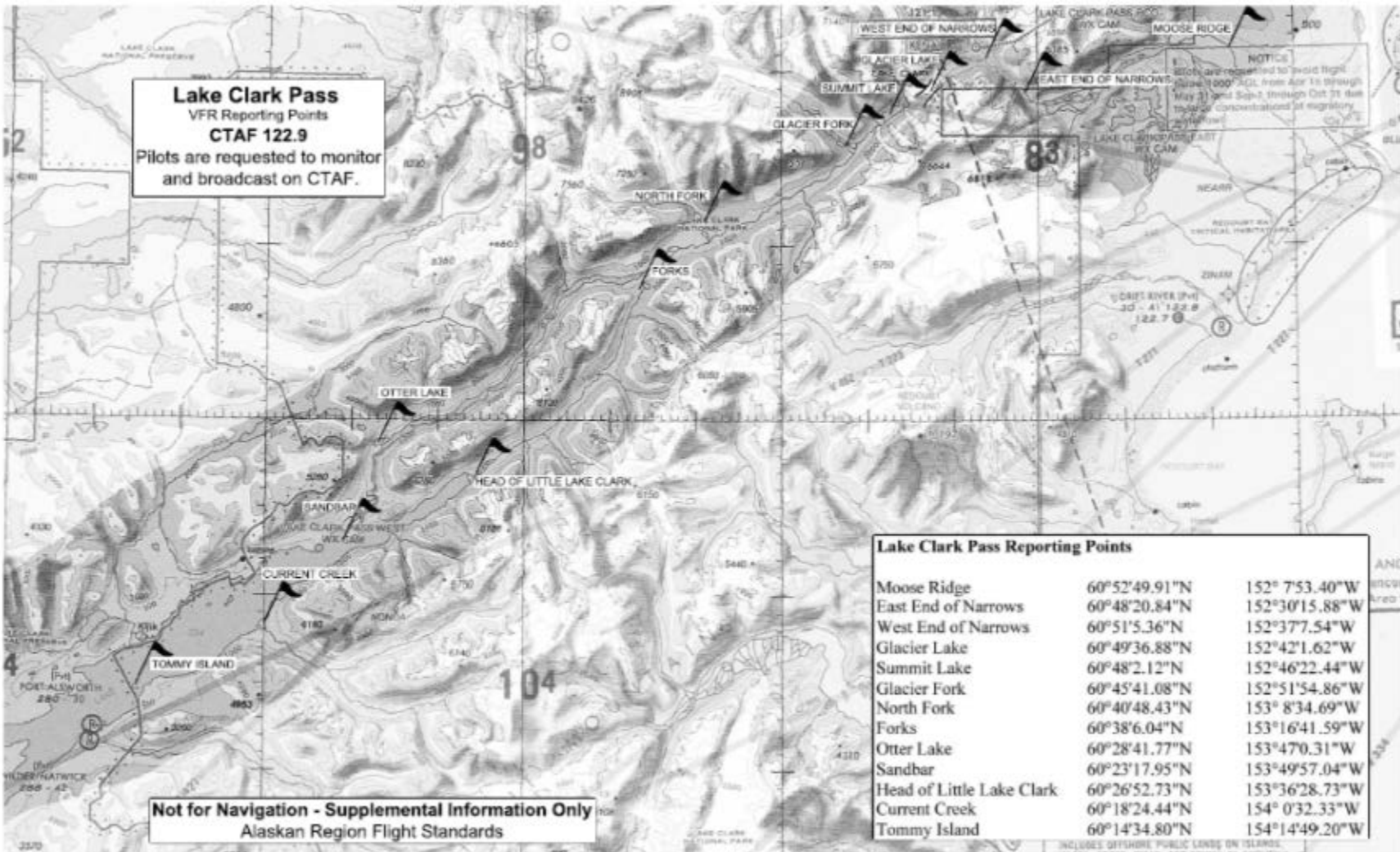
- Representatives from the FAA, NTSB, NIOSH, Aircraft Owners & Pilots Association (AOPA), Alaska Airmen's Association, the Alaskan Aviation Safety Foundation, Alaska Air Carriers Association, along with other aviation industry and government organizations formed the **Mat-Su Mid-Air Collision Avoidance Working Group.**



Mat-Su Mid-Air Collision Avoidance Working Group

- **Examined existing guidance**
- **Conducted a pilot survey**
- **Collected direct input from**
 - FAA LOBs
 - Military Operators
 - General Aviation Pilots
 - Regional CFIs
 - Air Taxi Pilots
 - Lake Clark Pass

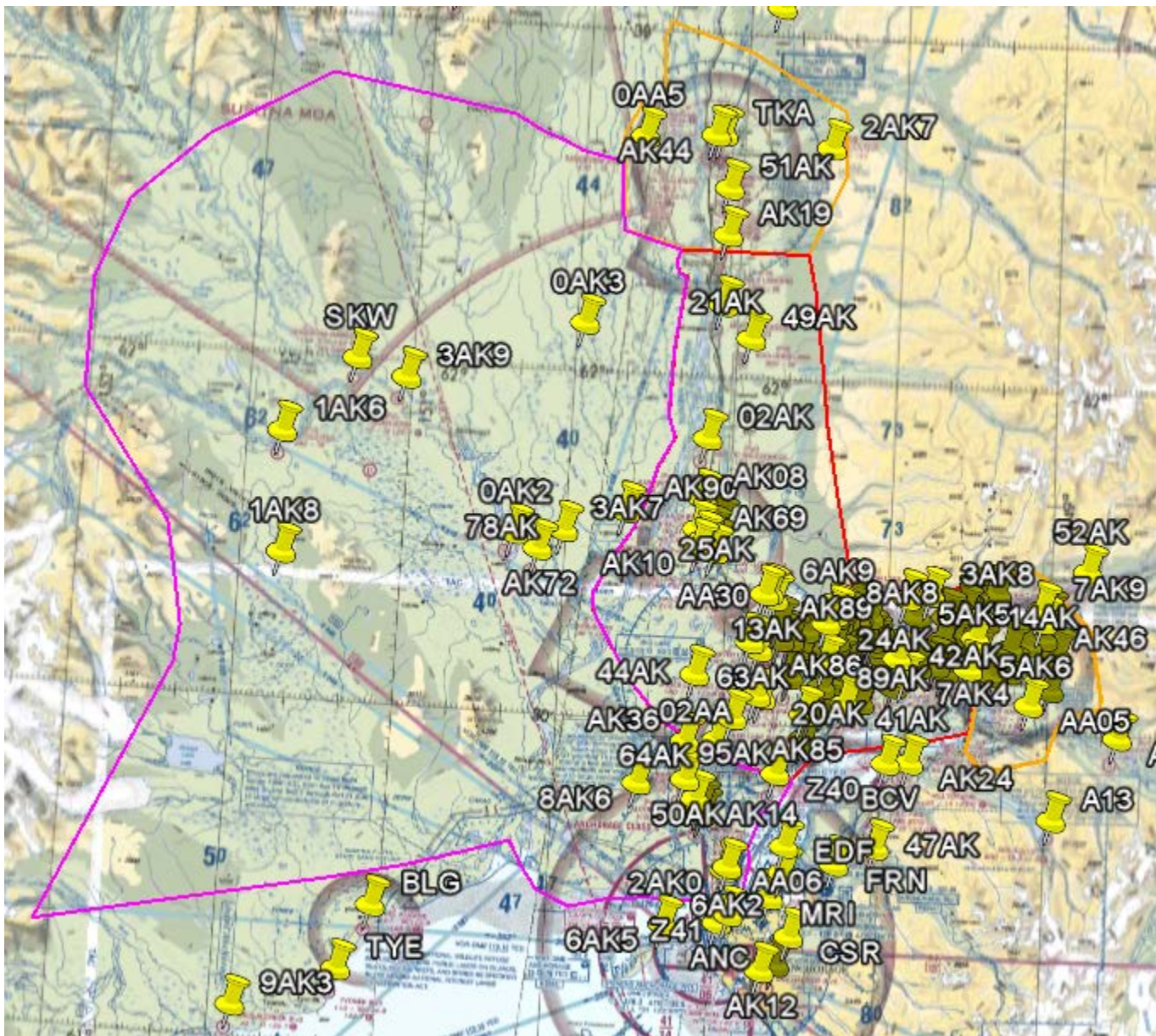


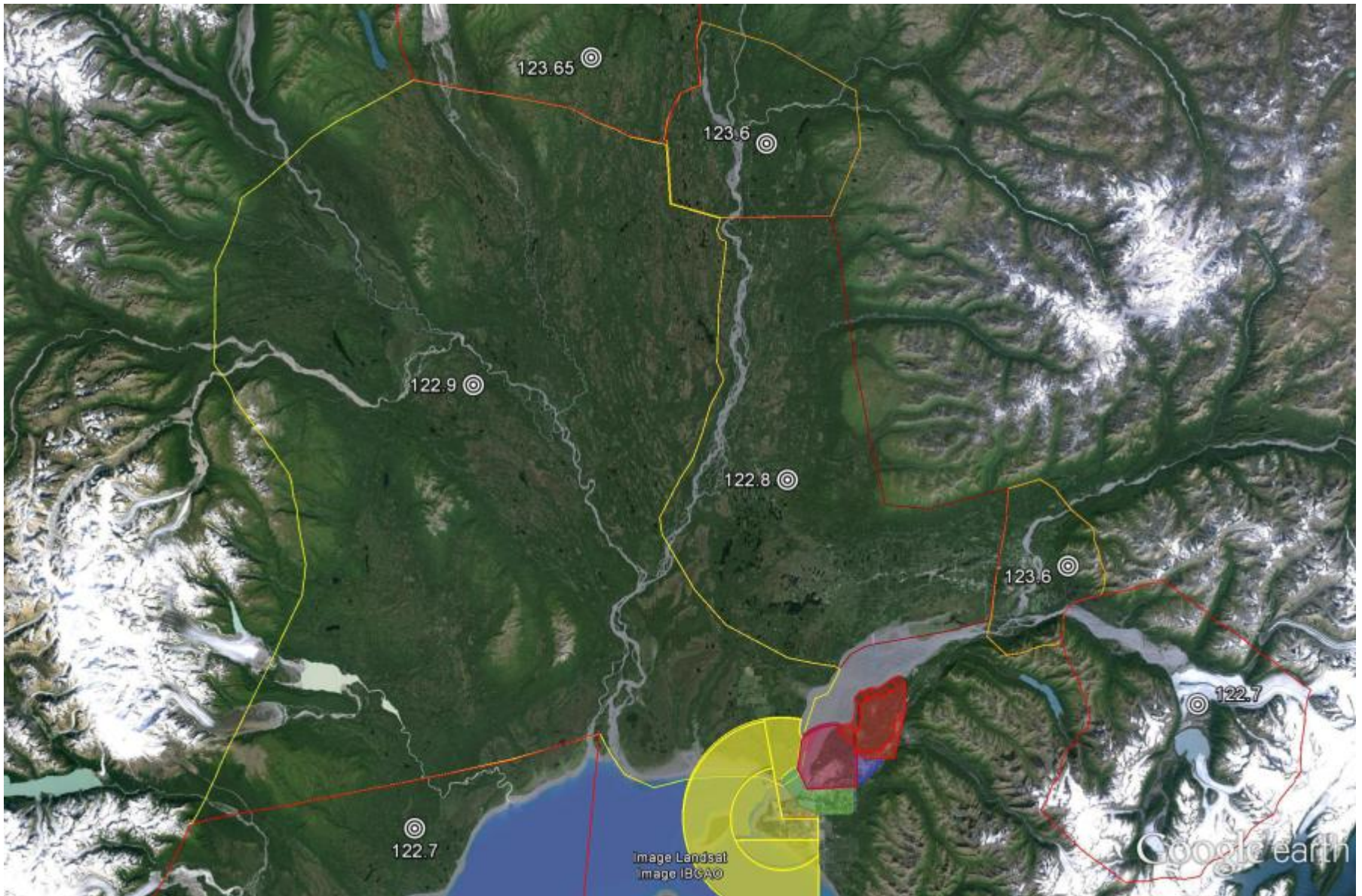


Recommendations

- A set of recommendations was made to reduce confusing guidance concerning CTAF frequencies.
- These recommendations included establishment of designated CTAF Areas for discrete geographic areas, as opposed to the standard 10 mile radius around an airport.
- Change AIM CTAF definition to include above recommendations.







Matanuska Susitna Valley Designated CTAF Areas

Effective: May 29, 2014
Alaskan Region Flight Standards Division
Information Only: Not for Navigation

**Mat-Su West
CTAF
122.9**

**Cook Inlet
CTAF
122.7**

**Talkeetna
FSS/CTAF
123.6**

**Wasilla/Willow
CTAF
122.8**

**Palmer
FSS/CTAF
123.6**

Note
All airports within the depicted boundaries utilize the Designated CTAF Area.

Legend
⚡ High Traffic Points
..... CTAF Boundaries

0 5 10 20 30 40
Miles

Advisory
Does not depict 14 CFR Part 93 Special Air Traffic Rules areas or Anchorage Class C Airspace. Refer to Anchorage Class C Airspace or 14 CFR Part 93 sections in the Alaska Supplement or other appropriate publications.





GARMIN

GNS 530

COM
136.975
118.000

VLOC
117.95
108.00

VOR
RAD
DIS

ENR



GPS MSG NAV 0000

C

C

PWR VOL PUSH SQ

V

V

VOL PUSH ID

COM/VLOC

PUSH C/V

CDI OBS MSG FPL VNAV PROC

PUSH CRSR

RNG

MAP

MENU

CLR

ENT

DEFAULT NAV

GPS



Federal Aviation Administration